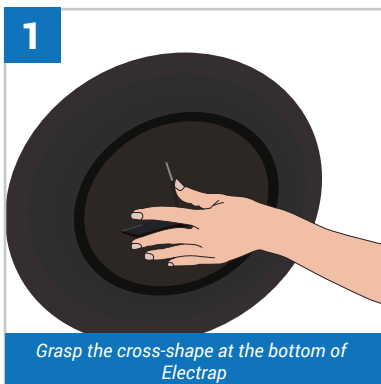
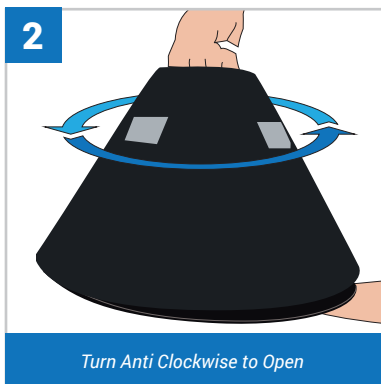


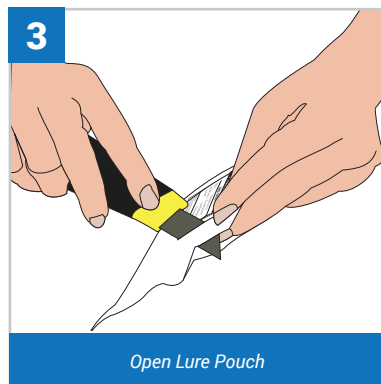
# HOW TO PREPARE ELECTRAP



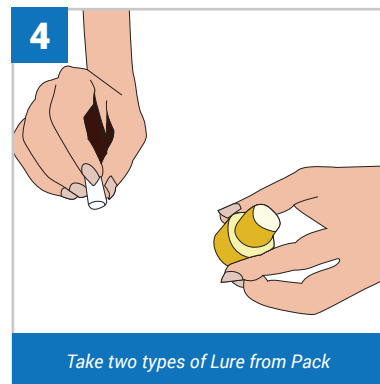
1 Grasp the cross-shape at the bottom of Electrap



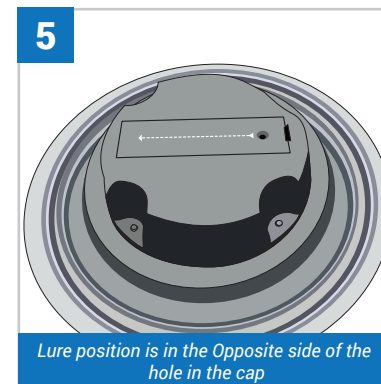
2 Turn Anti Clockwise to Open



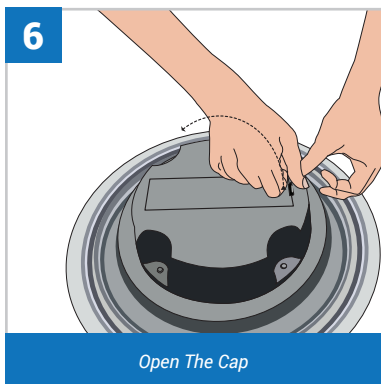
3 Open Lure Pouch



4 Take two types of Lure from Pack



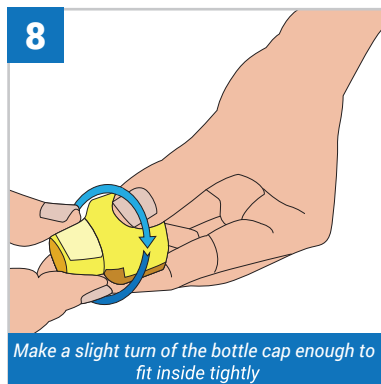
5 Lure position is in the Opposite side of the hole in the cap



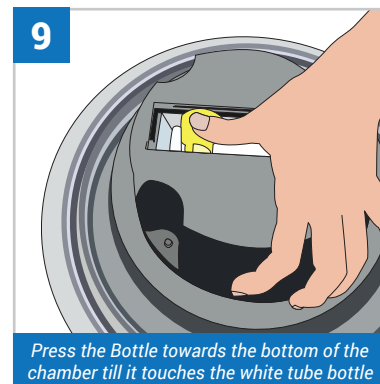
6 Open The Cap



7 Keep the White tube at the bottom corner opposite the hole as shown at Image 5



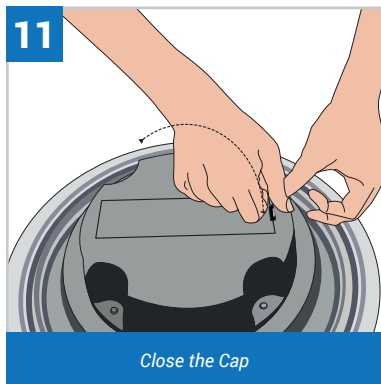
8 Make a slight turn of the bottle cap enough to fit inside tightly



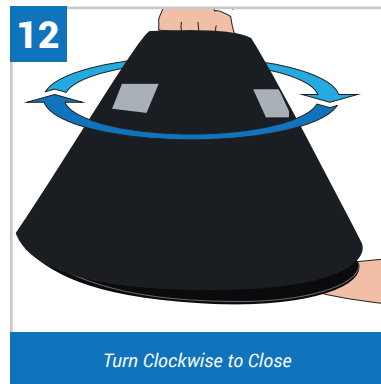
9 Press the Bottle towards the bottom of the chamber till it touches the white tube bottle



10 Two bottles must be kept together on Opposite sides of the hole as shown in Image 5



11 Close the Cap



12 Turn Clockwise to Close



Place rain guard on the top. Now you are ready to catch RPWs